

Elgin County Archives and Museum



View of Port Stanley, Looking North from Hillcrest

<https://heritagecollections.elgin.ca/en/permalink/archives151588>

Museum / Archive: Elgin County Archives
Part Of: Ian D. Cameron Collection
Description Level: File
Item Number: P-2
Accession Number: 2011-10
Storage Room: Archives Storage Rm. 110
Storage Location: R11 S5 Sh3 B2 F2
GMD: graphic material
Date Range: ca. 1875
Publication: Posted on Facebook: July 7, 2020.
Series: Ian D. Cameron Collection - Photographs Series

Scope and Content:

View of Port Stanley, Looking North from Hillcrest, ca. 1875. View includes the covered bridge along the route of the London & Port Stanley Railway (upper left corner), Batt's Hotel (constructed 1870, destroyed by fire in 1890) on the southwest corner of Main and Bridge Streets, what is now Colborne Street, Main Street, Christ Church Anglican church, the Payne House (built in 1873 by Port Stanley postmaster and customs officer Manuel Payne; now the Telegraph House B & B), and the post office (later moved to Hill Street). File includes:

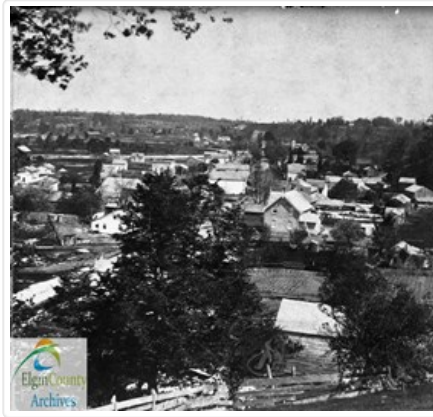
glass-plate negative

glass lantern slide

Name Access: Port Stanley (Ont.)
London and Port Stanley Railway
Payne (family)
Payne House (Port Stanley)
Payne, Manuel
Christ Church (Port Stanley)

Subject Access: Railways
Hotels
Churches

Images



[Permalink](#)

🗨 No comments yet — [Join the discussion](#)



Christ Church, Port Stanley, Looking Northwest

<https://heritagecollections.elgin.ca/en/permalink/archives151624>

Museum / Archive: Elgin County Archives
Part Of: Ian D. Cameron Collection
Description Level: File
Item Number: P-5
Accession Number: 2011-10
Storage Room: Archives Storage Rm. 110
Storage Location: R11 S5 Sh3 B2 F5
GMD: graphic material
Date Range: 1868
Series: Ian D. Cameron Collection - Photographs Series

Scope and Content:

Christ Church, Port Stanley, Looking Northwest from the top of modern day Matilda Street, 1868. View includes Christ Church Anglican church and cemetery, built in 1845 on land given by Colonel John Bostwick, the road that is now Colborne Street, Kettle Creek, and the London & Port Stanley Railway covered bridge. The modern day locations of the Kanagio Yacht Club, Foodland, and Selborne Park are visible. This image has been copied from an unidentified publication, where it was printed with the caption "Christ Church, and vicinity, as it appeared from the hill in 1868, with old covered bridge over Creek in background. (From an old photograph in possession of Warren C. Miller, St. Thomas)". File includes:

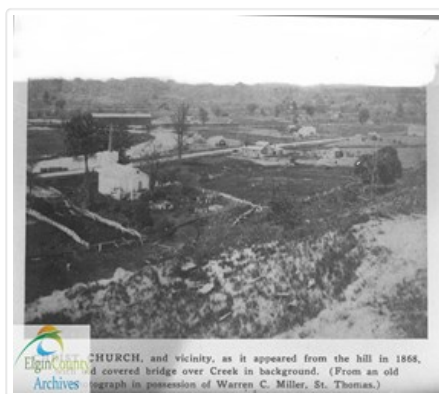
glass-plate negative

glass lantern slide

Name Access: Port Stanley (Ont.)
London and Port Stanley Railway
Christ Church (Port Stanley)

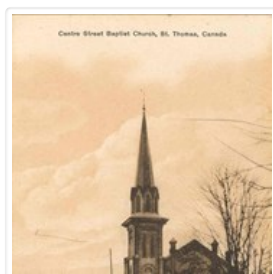
Subject Access: Churches
Religion

Images



[Permalink](#)

🗨 No comments yet — [Join the discussion](#)



Postcard - Centre Street Baptist Church, St. Thomas

<https://heritagecollections.elgin.ca/en/permalink/archives114269>

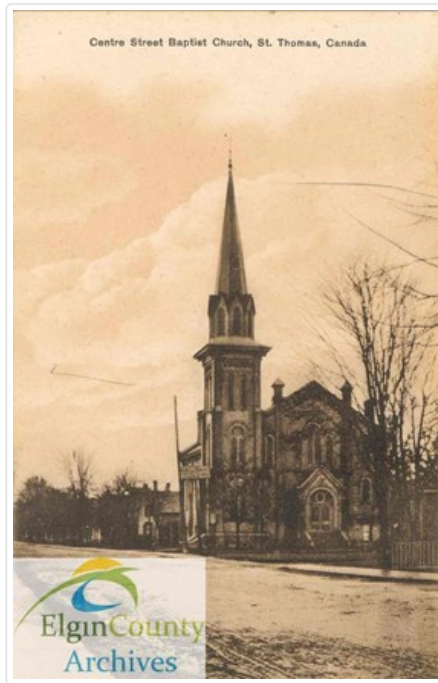
Museum / Archive: Elgin County Archives
Part Of: Elgin County Photograph Collection
Description Level: Item
Item Number: P 392
Accession Number: 2013-05
Storage Room: Archives Storage Rm. 105
Storage Location: C3 Sh5 B5 F8
GMD: graphic material
Date Range: ca.1915
Physical Description: 1 postcard : b&w ; 14 x 9 cm
Scan Resolution: 300 d.p.i.

Scope and Content:

Black and white postcard showing Centre Street Baptist Church, St. Thomas, ca. 1910s. View is looking south on Southwick Street from opposite the Southwick Street fire hall. The London & Port Stanley Railway crossing at the intersection of Centre and Southwick Streets is also in view.

Name Access: Centre Street Baptist Church
London and Port Stanley Railway
Subject Access: Churches

Images



[Permalink](#)

🗨 No comments yet — [Join the discussion](#)



St. Thomas Street Railway Car, Wellington Street

<https://heritagecollections.elgin.ca/en/permalink/archives153917>

Museum / Archive: Elgin County Archives
Part Of: Ken Verrell Collection
Description Level: Item
Accession Number: 2016-30
Storage Room: Archives Storage Rm. 107
Storage Location: R4 S5 Sh3 B1 50
GMD: **graphic material**
Date Range: ca. 1920
Series: Ken Verrell Collection - Photographs series
Physical Description: 1 photograph : b&w

Scope and Content:

Black and white photograph showing an eastbound St. Thomas Street Railway car on Wellington Street, approaching the intersection with Railway Street (now Princess Avenue), ca. 1920. View is looking west on Wellington Street from the London and Port Stanley Railway tracks running north-south between Railway Street (Princess Avenue) and Moore Street. The spire of Trinity Anglican Church on the northeast corner of Southwick and Wellington Streets is visible in the background. The residence visible at 119 Wellington Street on the northwest corner of Wellington and Railway Streets was occupied when this photograph was taken by Charles A. Riddle, roofing contractor. Marlatt & Marlatt coal, wood, cement and pipe dealers is visible at 120 Wellington Street on the southeast corner of Wellington and Railway Streets. Two horse drawn sleighs are visible.

Name Access: St. Thomas (Ont.)
 St. Thomas Street Railway
 London and Port Stanley Railway
 Trinity Anglican Church, St. Thomas

Subject Access: Railways
 Churches

Images



[Permalink](#)

🗨 No comments yet — [Join the discussion](#)