

Elgin County Archives and Museum



London and Port Stanley Railway - CNR Acquires London and Port Stanley Railway

<https://heritagecollections.elgin.ca/en/permalink/archives32136>

Museum / Archive: Elgin County Archives
Part Of: St. Thomas Times-Journal fonds
Creator: St. Thomas Times-Journal
Description Level: Item
Accession Number: 2008-01
Storage Room: Archives Storage Rm. 105
Storage Location: C8 Sh3 B1 F2 6
GMD: graphic material
Date Range: 1965
Series: St. Thomas Times-Journal fonds - London and Port Stanley Railway file
Physical Description: 2 photographs : b&w ; 14 x 13 cm

Scope and Content:

Two black and white photographs used in St. Thomas Times-Journal article published December 16, 1965 with captions:

"Surprise Bouquet - Mrs. A.E. Feindel, of 416 Beatrice Avenue, London, was pleasantly surprised yesterday afternoon when she was presented with a bouquet of roses as she prepared to board a Canadian National Railways train at London. The train was the new rail liner, termed a 'railway automobile', and it was making its initial trip from London to Toronto. Mrs. Feindel was its first woman passenger. Presenting the flowers is Douglas V. Gonder, of Toronto, vice-president of the CNR." (C8 Sh3 B1 F2 6a)

"At The Ready - During a ceremony inaugurating a new rail liner service from London to Toronto Wednesday, these two young women employees of the Canadian National Railways held a company flag just prior to the train's break-through. From left to right: J.R. Church, CNR trainmaster and road foreman; Miss Irene Burns; and Miss Bonnie Bacigalupa, all of London." (C8 Sh3 B1 F2 6b)

Name Access: St. Thomas (Ont.)
St. Thomas Times-Journal
London and Port Stanley Railway
Subject Access: Newspapers
Railways

Images



[Permalink](#)

🗨 No comments yet — [Join the discussion](#)



London and Port Stanley Railway - London and Port Stanley Railway Station Modelled

<https://heritagecollections.elgin.ca/en/permalink/archives32137>

Museum / Archive: Elgin County Archives
Part Of: St. Thomas Times-Journal fonds
Creator: St. Thomas Times-Journal
Description Level: Item
Accession Number: 2008-01
Storage Room: Archives Storage Rm. 105
Storage Location: C8 Sh3 B1 F2 7
GMD: graphic material
Date Range: 1972
Series: St. Thomas Times-Journal fonds - London and Port Stanley Railway file
Physical Description: 1 photograph : b&w ; 20.5 x 25.5 cm

Scope and Content:

Black and white photograph used in St. Thomas Times-Journal article published April 8, 1972 with caption: "This model of the London and Port Stanley Railway Station [in St. Thomas] indicates George Mann's nostalgia for railroading."

Name Access: St. Thomas (Ont.)
St. Thomas Times-Journal
London and Port Stanley Railway
Port Stanley (Ont.)
Subject Access: Newspapers
Railways

Images



[Permalink](#)

🗨 No comments yet — [Join the discussion](#)

London & Port Stanley Railway, Incline Railway, Port Stanley

<https://heritagecollections.elgin.ca/en/permalink/archives131648>



Museum / Archive: Elgin County Archives
Part Of: Elgin County Vertical File Collection
Description Level: Item
Accession Number: 2003-17
2016-32
Storage Room: Archives Storage Rm. 107
Storage Location: Box 100, File 8 8a
R5 S4 Sh4 B2
GMD: graphic material
Date Range: 1918
Physical Description: 1 photograph : b&w
1 slide : b&w

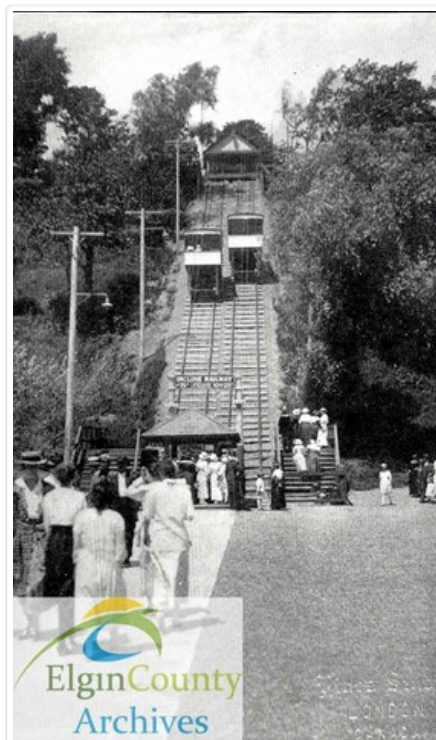
Scope and Content:

One black and white photograph showing the Incline Railway purchased by the London & Port Stanley Railway. In 1918, 195,248 patrons rode the Incline Railway. Caption reads: "Multiplication of patronage followed purchase of the Incline Railway by the L. & P. S. R. Service was perfected and fares were cut to half the old rates." Included in The London and Port Stanley Railway Annual Reports for years ending June 30th 1916-1917-1918-1919.

There is also a copy of this photograph in the format of a slide, from AN 2016-32.

Name Access: Port Stanley (Ont.)
London (Ont.)
London and Port Stanley Railway
Subject Access: Railways

Images



🗨 No comments yet — Join the discussion



London and Port Stanley Railway

<https://heritagecollections.elgin.ca/en/permalink/archives32129>

Museum / Archive: Elgin County Archives
Part Of: St. Thomas Times-Journal fonds
Creator: St. Thomas Times-Journal
Description Level: File
Accession Number: 2008-01
Storage Room: Archives Storage Rm. 105
Storage Location: C8 Sh3 B1 F2
GMD: **graphic material**
Date Range: 1953-1979
Series: St. Thomas Times-Journal fonds - London and Port Stanley Railway file
Physical Description: 35 photographs : b&w

Scope and Content:

File contains black and white photographs used in St. Thomas Times-Journal articles concerning the London and Port Stanley Railway, 1953-1979.

Name Access: St. Thomas (Ont.)
St. Thomas Times-Journal
London and Port Stanley Railway
Port Stanley (Ont.)
Subject Access: Newspapers
Railways

🗨 No comments yet — Join the discussion



London and Port Stanley Railway

<https://heritagecollections.elgin.ca/en/permalink/archives153134>

Museum / Archive: Elgin County Archives
Part Of: Elgin County Vertical File Collection
Description Level: Item
Storage Room: Archives Storage Rm. 110
Storage Location: Box 250, File 2
GMD: textual records
Date Range: 1853-2011
Physical Description: 5 cm. of textual records

Scope and Content:

Copies of newspaper clippings, photographs and other records relating to the history of the London and Port Stanley Railway, with an emphasis on the railway's operations in Port Stanley, Ontario.

Name Access: Port Stanley (Ont.)
London and Port Stanley Railway
Subject Access: Railways

[Permalink](#)

🗨 No comments yet — [Join the discussion](#)



London and Port Stanley Railway - Last Run Under London and Port Stanley Railway Name

<https://heritagecollections.elgin.ca/en/permalink/archives32135>

Museum / Archive: Elgin County Archives
Part Of: St. Thomas Times-Journal fonds
Creator: St. Thomas Times-Journal
Description Level: Item
Accession Number: 2008-01
Storage Room: Archives Storage Rm. 105
Storage Location: C8 Sh3 B1 F2 5
GMD: graphic material
Date Range: 1965
Publication: Posted on Facebook and Instagram: August 21, 2019.
Series: St. Thomas Times-Journal fonds - London and Port Stanley Railway file
Physical Description: 1 photograph : b&w ; 15 x 13 cm

Scope and Content:

Black and white photograph used in St. Thomas Times-Journal article published December 11, 1965 with caption: "At The Controls - Charles Joseph Frederick Ross, London P.U.C. commissioner, at the controls of the last L. and P.S. train to run between London and Port Stanley, is seen receiving instructions from A.L. Furanna, general manager of the London P.U.C. and the London Railway Commission. They were part of a large group of dignitaries from London who enjoyed a last ride before the C.N.R. takes over the line."

Name Access: St. Thomas (Ont.)
 St. Thomas Times-Journal
 London and Port Stanley Railway
 Port Stanley (Ont.)

Subject Access: Newspapers
 Railways

Images



[Permalink](#)

🗨 No comments yet — [Join the discussion](#)



London and Port Stanley Railway Car, Port Stanley

<https://heritagecollections.elgin.ca/en/permalink/archives153911>

Museum / Archive: Elgin County Archives
Part Of: Ken Verrell Collection
Description Level: Item
Accession Number: 2016-30
Storage Room: Archives Storage Rm. 107
Storage Location: R4 S5 Sh3 B1 44
GMD: graphic material
Date Range: ca. 1955
Publication: Posted on Facebook, Instagram and Twitter: July 15, 2020.
Series: Ken Verrell Collection - Photographs series
Physical Description: 1 photograph : b&w

Scope and Content:

Black and white photograph showing London and Port Stanley Railway car 6 embarking passengers at a stop in the vicinity of Bessie and Maud Streets in Port Stanley, ca. 1955.

Name Access: Port Stanley (Ont.)
London and Port Stanley Railway
Subject Access: Railways

Images



[Permalink](#)

🗨 No comments yet — [Join the discussion](#)



London and Port Stanley Railway Car, Port Stanley

<https://heritagecollections.elgin.ca/en/permalink/archives153912>

Museum / Archive: Elgin County Archives
Part Of: Ken Verrell Collection
Description Level: Item
Accession Number: 2016-30
Storage Room: Archives Storage Rm. 107
Storage Location: R4 S5 Sh3 B1 45
GMD: graphic material
Date Range: ca. 1955
Series: Ken Verrell Collection - Photographs series
Physical Description: 1 photograph : b&w
Scope and Content:

Black and white photograph showing London and Port Stanley Railway car 10 at the L & PS main station in Port Stanley, ca. 1955. View is looking southeast.

Name Access: Port Stanley (Ont.)
London and Port Stanley Railway
Subject Access: Railways

Images



[Permalink](#)

🗨 No comments yet — [Join the discussion](#)



London and Port Stanley Railway - London and Port Stanley Railway Cars Featured at Halton County Radial Railway Museum

<https://heritagecollections.elgin.ca/en/permalink/archives32140>

Museum / Archive: Elgin County Archives
Part Of: St. Thomas Times-Journal fonds
Creator: St. Thomas Times-Journal
Description Level: Item
Accession Number: 2008-01
Storage Room: Archives Storage Rm. 105

Storage Location: C8 Sh3 B1 F2 10
GMD: graphic material
Date Range: 1979
Series: St. Thomas Times-Journal fonds - London and Port Stanley Railway file
Physical Description: 3 photographs : b&w ; 13 x 15 cm or smaller
Scope and Content:

Three black and white photographs used in St. Thomas Times-Journal article published September 1, 1979 with captions:

"Restoration - Work is done on the exterior of [London and Port Stanley Railway] trailer car number 3 at the Halton County Radial Railway Museum. It takes countless hours of volunteer labour to put the old railway cars back in first-class condition." (C8 Sh3 B1 F2 10a)

"Like New - The interior of [London and Port Stanley Railway] motor car number 8 has been restored to excellent condition. The motor car, which the L. & P.S. operated until the end of passenger service in 1957, is the only L. & P.S. car still running." (C8 Sh3 B1 F2 10b)

"Much Work To Do - The interior of this L. & P.S. car shows the ravages of time and years of no use. A major task faced the members of the Halton County Radial Railway Museum in fixing this car up." (C8 Sh3 B1 F2 10c)

Name Access: St. Thomas (Ont.)
St. Thomas Times-Journal
London and Port Stanley Railway
Subject Access: Newspapers
Railways

Images



🗨 No comments yet — Join the discussion



London and Port Stanley Railway - Last Excursion to Port Stanley

<https://heritagecollections.elgin.ca/en/permalink/archives32131>

Museum / Archive: Elgin County Archives
 Part Of: St. Thomas Times-Journal fonds
 Creator: St. Thomas Times-Journal
 Description Level: Item
 Accession Number: 2008-01
 Storage Room: Archives Storage Rm. 105
 Storage Location: C8 Sh3 B1 F2 2
 GMD: **graphic material**
 Date Range: 1957
 Publication: Published in the Bygone Days section of the St. Thomas Times-Journal and on the Archives' flickr site: January 19, 2012.
 Series: St. Thomas Times-Journal fonds - London and Port Stanley Railway file
 Physical Description: 1 photograph : b&w ; 16 x 10 cm

Scope and Content:

Black and white photograph used in St. Thomas Times-Journal article published January 31, 1957 with caption: "Last Excursion - On Wednesday afternoon, 190 youngsters from Trafalgar Public School, London, anxious to take a last ride on the L. & P.S. to Port Stanley, went on an organized excursion to the lakeside and made a great outing of it. Here a few of them are seen streaming aboard the train at London. After tomorrow, the excursion would not have been possible unless they had been content to come only as far as St. Thomas, as the service between St. Thomas and Port Stanley terminates on Friday. Between St. Thomas and London the passenger service will be continued until Monday, February 18."

Name Access: St. Thomas (Ont.)
 St. Thomas Times-Journal
 London and Port Stanley Railway
 Port Stanley (Ont.)
 Subject Access: Newspapers
 Railways

Images



[Permalink](#)

🗨 No comments yet — [Join the discussion](#)



London & Port Stanley Railway- View of Stanley Beach, Port Stanley

<https://heritagecollections.elgin.ca/en/permalink/archives123931>

Museum / Archive: Elgin County Archives
Part Of: Elgin County Vertical File Collection
Creator: Heritage Port, Port Stanley
Description Level: File
Accession Number: 2013-37
Storage Room: Archives Storage Rm. 110
Storage Location: Box 152, File 20
R10 S3 Sh3 B2
GMD: graphic material
Date Range: ca. 1910
Publication: Postcard is part of a set of ten postcards published ca. 2013 by Senton Incorporated. The images used are from the collection of Robert Weare.
Physical Description: 1 postcard
Name Access: St. Thomas (Ont.)
London and Port Stanley Railway
Canada Southern Railway Station
Subject Access: Railways

Images



[Permalink](#)

🗨 No comments yet — [Join the discussion](#)



London & Port Stanley Railway Timetable

<https://heritagecollections.elgin.ca/en/permalink/archives128416>

Museum / Archive: Elgin County Archives
Part Of: London and Port Stanley Railway Company fonds
Description Level: Item
Storage Room: Archives Storage Rm. 107
Storage Location: R3 S5 Sh5 B1 F28
GMD: textual records
Date Range: 1933

Scope and Content:

"London & Port Stanley Railway Timetable. Provides rapid and efficient electric passenger service between London, St. Thomas, Port Stanley, and Intermediate Points. Timetable No. 46, Effective May 19, 1933".

Name Access: London and Port Stanley Railway
Subject Access: Railways

Documents

R3_S5_Sh5_B1_F28_1.pdf

[Read PDF](#)

[Download PDF](#)

[Permalink](#)

No comments yet — [Join the discussion](#)



Scenes on the London and Port Stanley Railway

<https://heritagecollections.elgin.ca/en/permalink/archives172106>

Museum / Archive: Elgin County Archives
Part Of: Elgin County Vertical File Collection
Description Level: Item
Accession Number: 2016-32
Storage Room: Archives Storage Rm. 107
Storage Location: Box 100, File 8 53
R5 S4 Sh4 B2
GMD: graphic material
Date Range: ca. 1916-1919
Physical Description: 1 slide : b&w
Name Access: London and Port Stanley Railway
London (Ont.)
Port Stanley (Ont.)
Subject Access: Railways

Images



[Permalink](#)

🗨 No comments yet — [Join the discussion](#)



Scenes on the London and Port Stanley Railway

<https://heritagecollections.elgin.ca/en/permalink/archives172107>

Museum / Archive: Elgin County Archives
Part Of: Elgin County Vertical File Collection
Description Level: Item
Accession Number: 2016-32
Storage Room: Archives Storage Rm. 107
Storage Location: Box 100, File 8 54
R5 S4 Sh4 B2
GMD: graphic material
Date Range: ca. 1916-1919
Physical Description: 1 slide : b&w
Name Access: London and Port Stanley Railway
London (Ont.)
Port Stanley (Ont.)
Subject Access: Railways

Images



[Permalink](#)

🗨 No comments yet — [Join the discussion](#)



Scenes on the London and Port Stanley Railway

<https://heritagecollections.elgin.ca/en/permalink/archives172108>

Museum / Archive: Elgin County Archives
Part Of: Elgin County Vertical File Collection
Description Level: Item
Accession Number: 2016-32
Storage Room: Archives Storage Rm. 107
Storage Location: Box 100, File 8 55
R5 S4 Sh4 B2
GMD: graphic material
Date Range: ca. 1916-1919
Physical Description: 1 slide : b&w
Name Access: London and Port Stanley Railway
London (Ont.)
Port Stanley (Ont.)
Subject Access: Railways

Images



[Permalink](#)

🗨 No comments yet — [Join the discussion](#)

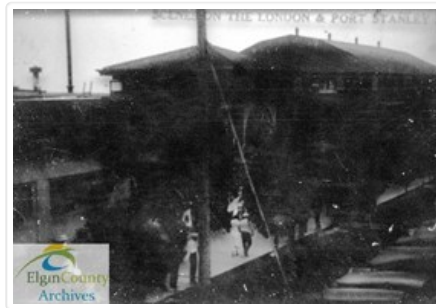


Scenes on the London and Port Stanley Railway

<https://heritagecollections.elgin.ca/en/permalink/archives172109>

Museum / Archive: Elgin County Archives
Part Of: Elgin County Vertical File Collection
Description Level: Item
Accession Number: 2016-32
Storage Room: Archives Storage Rm. 107
Storage Location: Box 100, File 8 56
R5 S4 Sh4 B2
GMD: graphic material
Date Range: ca. 1916-1919
Physical Description: 1 slide : b&w
Name Access: London and Port Stanley Railway
London (Ont.)
Port Stanley (Ont.)
Subject Access: Railways

Images



[Permalink](#)

🗨 No comments yet — [Join the discussion](#)



Scenes on the London and Port Stanley Railway


<https://heritagecollections.elgin.ca/en/permalink/archives172110>

Museum / Archive: Elgin County Archives
Part Of: Elgin County Vertical File Collection
Description Level: Item
Accession Number: 2016-32
Storage Room: Archives Storage Rm. 107
Storage Location: Box 100, File 8 57
R5 S4 Sh4 B2
GMD: graphic material
Date Range: ca. 1916-1919
Physical Description: 1 slide : b&w
Name Access: London and Port Stanley Railway
London (Ont.)
Port Stanley (Ont.)
Subject Access: Railways

Images



[Permalink](#)

 No comments yet — [Join the discussion](#)

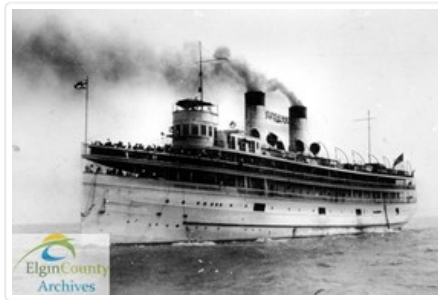


Scenes on the London and Port Stanley Railway


<https://heritagecollections.elgin.ca/en/permalink/archives172111>

Museum / Archive: Elgin County Archives
Part Of: Elgin County Vertical File Collection
Description Level: Item
Accession Number: 2016-32
Storage Room: Archives Storage Rm. 107
Storage Location: Box 100, File 8 58
R5 S4 Sh4 B2
GMD: graphic material
Date Range: ca. 1916-1919
Physical Description: 1 slide : b&w
Name Access: London and Port Stanley Railway
London (Ont.)
Port Stanley (Ont.)
Subject Access: Railways

Images



[Permalink](#)

 No comments yet — [Join the discussion](#)



Scenes on the London and Port Stanley Railway

<https://heritagecollections.elgin.ca/en/permalink/archives172112>

Museum / Archive: Elgin County Archives
Part Of: Elgin County Vertical File Collection
Description Level: Item
Accession Number: 2016-32
Storage Room: Archives Storage Rm. 107
Storage Location: Box 100, File 8 59
R5 S4 Sh4 B2
GMD: graphic material
Date Range: ca. 1916-1919
Physical Description: 1 slide : b&w
Name Access: London and Port Stanley Railway
London (Ont.)
Port Stanley (Ont.)
Subject Access: Railways

Images



[Permalink](#)

🗨 No comments yet — [Join the discussion](#)



Scenes on the London and Port Stanley Railway


<https://heritagecollections.elgin.ca/en/permalink/archives172113>

Museum / Archive: Elgin County Archives
Part Of: Elgin County Vertical File Collection
Description Level: Item
Accession Number: 2016-32
Storage Room: Archives Storage Rm. 107
Storage Location: Box 100, File 8 60
R5 S4 Sh4 B2
GMD: graphic material
Date Range: ca. 1916-1919
Physical Description: 1 slide : b&w
Name Access: London and Port Stanley Railway
London (Ont.)
Port Stanley (Ont.)
Subject Access: Railways

Images



[Permalink](#)

 No comments yet — [Join the discussion](#)