

Elgin County Archives and Museum



St. Thomas Street Railway Car, Wellington Street

<https://heritagecollections.elgin.ca/en/permalink/archives153917>

Museum / Archive: Elgin County Archives
Part Of: Ken Verrell Collection
Description Level: Item
Accession Number: 2016-30
Storage Room: Archives Storage Rm. 107
Storage Location: R4 S5 Sh3 B1 50
GMD: graphic material
Date Range: ca. 1920
Series: Ken Verrell Collection - Photographs series
Physical Description: 1 photograph : b&w

Scope and Content:

Black and white photograph showing an eastbound St. Thomas Street Railway car on Wellington Street, approaching the intersection with Railway Street (now Princess Avenue), ca. 1920. View is looking west on Wellington Street from the London and Port Stanley Railway tracks running north-south between Railway Street (Princess Avenue) and Moore Street. The spire of Trinity Anglican Church on the northeast corner of Southwick and Wellington Streets is visible in the background. The residence visible at 119 Wellington Street on the northwest corner of Wellington and Railway Streets was occupied when this photograph was taken by Charles A. Riddle, roofing contractor. Marlatt & Marlatt coal, wood, cement and pipe dealers is visible at 120 Wellington Street on the southeast corner of Wellington and Railway Streets. Two horse drawn sleighs are visible.


Name Access: St. Thomas (Ont.)
St. Thomas Street Railway
London and Port Stanley Railway
Trinity Anglican Church, St. Thomas

Subject Access: Railways
Churches

Images



[Permalink](#)

 No comments yet — [Join the discussion](#)



View of Port Stanley, Looking North from Hillcrest

<https://heritagecollections.elgin.ca/en/permalink/archives151588>

Museum / Archive: Elgin County Archives
Part Of: Ian D. Cameron Collection
Description Level: File
Item Number: P-2
Accession Number: 2011-10
Storage Room: Archives Storage Rm. 110
Storage Location: R11 S5 Sh3 B2 F2
GMD: graphic material
Date Range: ca. 1875
Publication: Posted on Facebook: July 7, 2020.
Series: Ian D. Cameron Collection - Photographs Series

Scope and Content:

View of Port Stanley, Looking North from Hillcrest, ca. 1875. View includes the covered bridge along the route of the London & Port Stanley Railway (upper left corner), Batt's Hotel (constructed 1870, destroyed by fire in 1890) on the southwest corner of Main and Bridge Streets, what is now Colborne Street, Main Street, Christ Church Anglican church, the Payne House (built in 1873 by Port Stanley postmaster and customs officer Manuel Payne; now the Telegraph House B & B), and the post office (later moved to Hill Street). File includes:

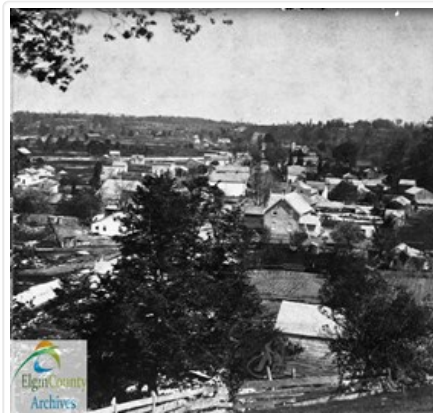
glass-plate negative


glass lantern slide

Name Access: Port Stanley (Ont.)
London and Port Stanley Railway
Payne (family)
Payne House (Port Stanley)
Payne, Manuel
Christ Church (Port Stanley)

Subject Access: Railways
Hotels
Churches

Images



 No comments yet — [Join the discussion](#)